

M/Y MAZAG

LEOPARD 27m | 2007



LOA: 27m
Beam: 6,05m
Draft: 1,15m
Capacity: 6 guests in 3 cabins

Crew: 3
Speed: cruising 34Kn – max 42Kn
Price: 950,000 €



Built in GRP by Italian yard Arno to an exterior and interior design by Andrea Bacigalupo, MAZAG was delivered in 2007 as one of the yard's Leopard 27 series. She features a bright and airy interior with a modern design and contemporary fittings. Accommodation is for six guests in three cabins consisting of a master suite, a double and a twin cabin, all with entertainment systems, televisions and en suite bathroom facilities.

Exterior areas are generous and feature a spacious open aft deck with al fresco dining facilities and a large sun bed, along with ready access to the swim platform for water sport activities. The forepeak has cushions and a small Bimini top, ideal for lounging in the sun in complete privacy. Indoors, the large windows in the upper saloon and an electric retractable roof offer the interior a feeling of space as well as great views. The area is spacious and has comfortable seating, a full entertainment centre and a dining area. There is an additional lounging area below deck with an LCD television screen. Meanwhile, twin 2,180hp MTU engines linked to Arneson surface drives give her a cruising speed of 34 knots.





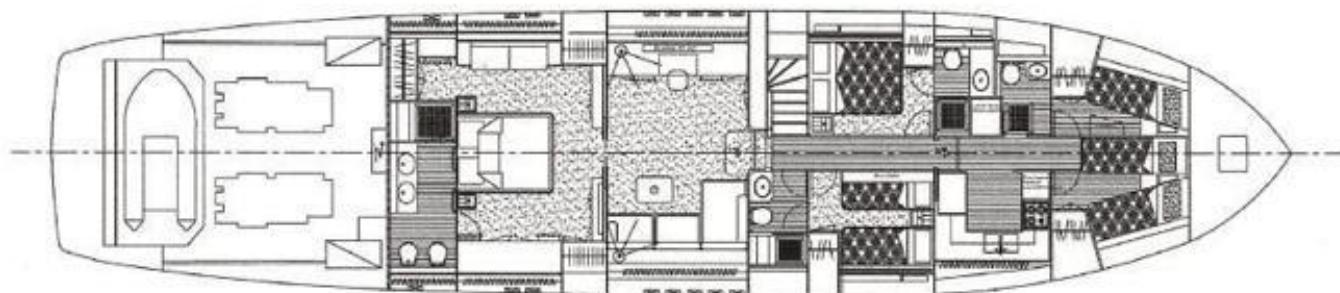
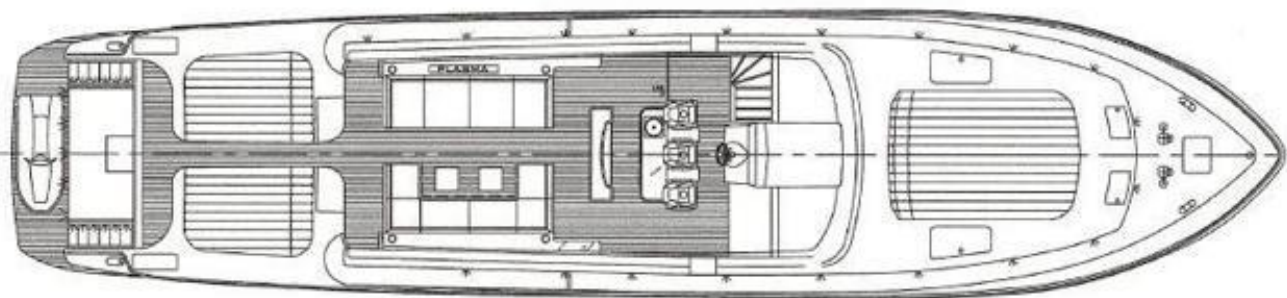
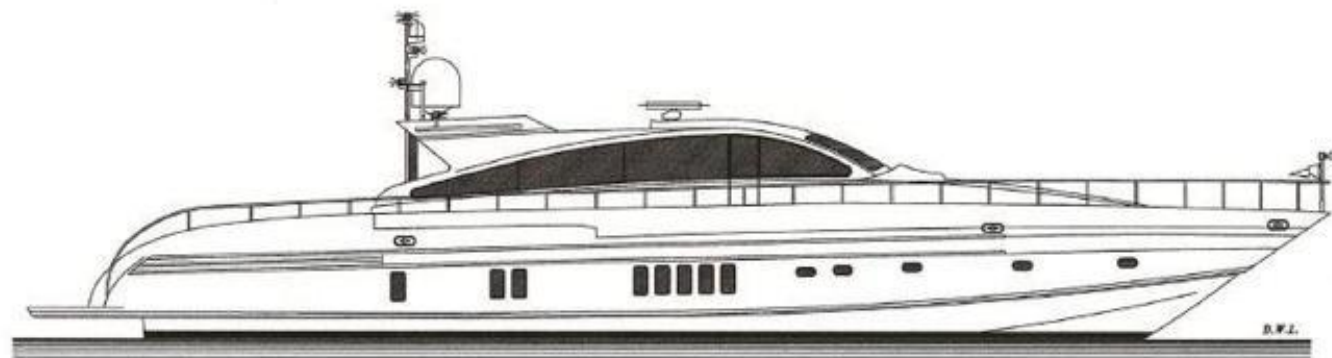












	CANTIERE NAVALE ARNO... <small>via Salaria 100 - 00198 Roma - Tel. 06/494111</small>	
	MY LEOPARD 27 COSTRUZIONE N° 37	
SCALA: 1 = 50 INCL. L.	PROGETTATA: Ing. G. CNA 1989 Ing. CNA confer. naut. art.	DATA: 20/10/08 00.0001

MAIN CHARACTERISTICS

Name	MAZAG (ex. BULL, MAHY)	
Type	Planing	
Builder	Leopard	
Year	2007	
Refit	2022	
LOA	27 m	88'7"
Beam	5,8 m	19'
Draft	1,6 m	5'3"
Flag	British	
Naval Architect	Paolo Caliarì	
Exterior Designer/Stylist	Paolo Caliarì	
Interior Designer	Andrea Bacigalupo	
Max Speed	42 knots	
Cruising Speed	34 knots	
Gross Tonnage	79 tons	
Guest Accommodation	6 guests in 3 staterooms	
Crew Accommodation	3 crew	

CONSTRUCTION

Hull Material	GRP
Superstructure	GRP
Decks	Teak with black caulking

MAIN MACHINERY

Engines	2 x MTU 16V 2000 M92 2180hp
Engine Hours	1,835 hrs. (September 2022)
Transmission	Arneson Surface Drives

GENERATORS & ELECTRICITY

Electricity	220V AC / 50 Hz / 3-Phase / 24V/DC
Generators	Kohler 1x20 Kw & 1x25 Kw
Generator Hours	Stbd 2,000Hours (September 2022) Port 1,600Hours (September 2022)

PERFORMANCE & CAPABILITIES

Fuel Capacity	8,000l	2,114G
Water Capacity	1,200l	317G



Grégory GHERAIA
Director of BLACKORANGE Superyacht Experts

+33699939099 | +971505796099
greg@blackorange-yachts.com

CANNES- DUBAI – HONG-KONG – BARCELONA
- GENEVE

BLACKORANGE
S U P E R Y A C H T E X P E R T S