



BLACKORANGE
SUPERYACHT EXPERTS

M/Y ZOUT

Maiora – 30 convertible - 2021



LOA: 30,5 m
Beam: 7,5 m
Draft: 2,1 m
Capacity: 12 guests in 5 cabins
Stabilizers: Seakeeper stabilizers

Crew: 5
Speed: cruising 22 Kn – max 26 Kn

Price: 7.900.000 EUR
Location: Italy





MAIORA

- Unique Convertible version with enclosed and climate controlled Sky-lounge
- Additional sportfly
- Full beam transversal tender garage to carry a 6.20m
- Official length under 24m
- The highest Grosse Tonnage in her range
- 5 guest cabin layout





































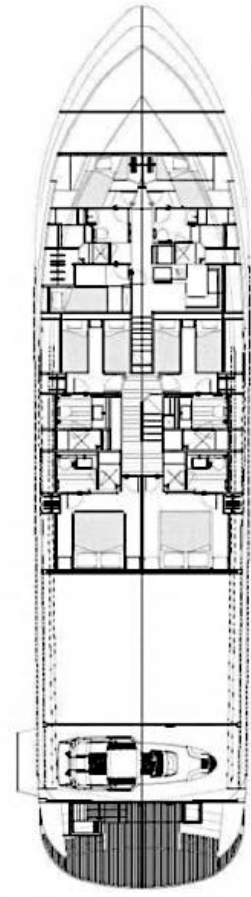
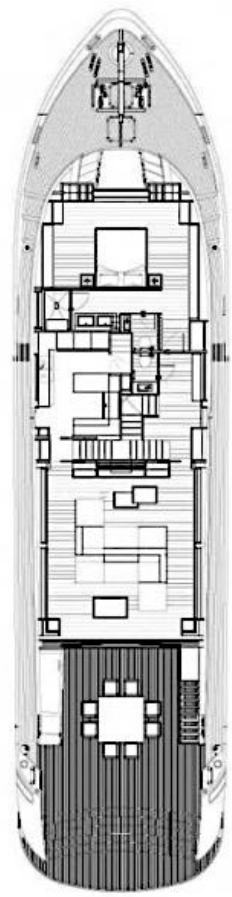
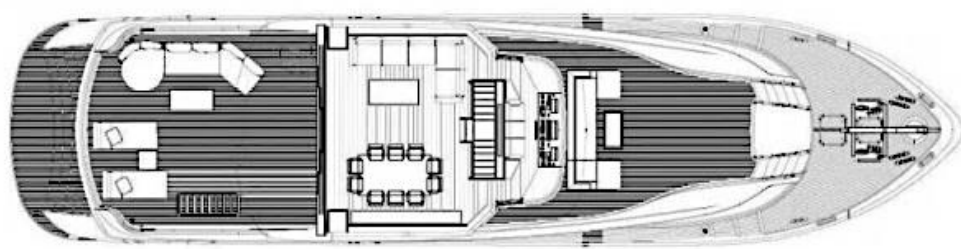












MAIN CHARACTERISTICS

Name	ZOUT	
Builder	Maiora	
Model	30 Convertible	
Year	2021	
LOA	30,5 m	100'5"
Beam	7,5 m	24'6"
Draft	2,1 m	6'11"
Flag	Malta (private)	
Max Speed	26 knots	
Cruising Speed	22 knots	
Hull	Semi Displacement	
Stabilizers	CMC Electric fins (zero speed & underway)	
Guest Accommodation	12 guests in 5 staterooms	
Crew Accommodation	5 crew	

CONSTRUCTION

Hull Material	GRP
Decks	Teak with black caulking

MAIN MACHINERY

Engines	2x MTU, Model: 16V 2000 M96L, 2,600hp
Engine Hours	580 Hours (September 2024)
Fuel Type	Diesel

CAPACITIES

Fuel Capacity	13,150 l	3,474 G
Water Capacity	2,800 l	740 G

GENERATORS

Generators	2 x KOHLER 45 Kw + Seamless transfer
Generator Hours	Approx. 1,980 Hours (September 2024)

ACCOMMODATIONS

1 x En-suite Master stateroom located forward on the main deck

2 x En-suite VIP staterooms located on the lower deck fitted with double beds

2 x En-suite twin guest staterooms located on the lower deck fitted single beds + 2 pullmans

3 x Crew cabins : 1 single captain's cabin + 2 twin bunk bed cabins

EQUIPMENT

- Full convertible air-conditioned upper deck salon with aft electric door that slides and hides completely out of the way and up/down electric side windows
- Hammam in the Master Suite's bathroom, equipped with Calacatta white marble of Carrara
- Sauna in the aft area by the sea, located next to the swimming platform
- Calacatta white marble of Carrara also for the sinks in the bathroom
- Privacy pop-up shade from the ceiling (aft deck)
- Observatory deck dedicated to private sunbathing
- Sunbeds on the foredeck
- Sunbathing areas in the aft sundeck
- Upgrade (2) KOHLER 45 kW
- Gensets parallel system + Seamless transfer

EQUIPMENT

- Upgrade FURUNO Navigation Equipment package with Radar FAR 2238
- Navigation Software AXSEA TimeZero Professional for mega-yacht with 5 monitors 24" in the helm station
- FLIR thermal camera
- AIS and Weather Station
- 6 x Camera CCTV system
- 2 x External Control Wings Port and Starboard
- Carbon Fibre poles for outside shade and microholed tents
- Duplex IDROMAR 360 l/h tot. watermaker
- Third Control station (aft located) + Display
- CMC Electric Fin Stabilizers (Zero Speed and Underway)
- Monitoring System
- GSM Text Alarm system via text message on mobile phone, JL Speakers (outside)
- B&W speakers (inside)
- SONOS audio system
- 65" SAMSUNG 8K pop-up TV in the upper deck saloon
- Pop-up mechanism
- 65" SAMSUNG 8K TV in the master suite (main deck)
- 55" SAMSUNG 8K TV in the main deck saloon with opening-up system
- SEATEL ST24 TV Antenna
- One-off custom-made piece of Art by GIANFRANCO ZAPPETTINI on the front in the main saloon
- Water softener

- Water U.V. sterilizer
- Cooler fridge in the upper deck saloon
- 1 x Bow area professional MIELE washer
- 1 x Bow area professional MIELE dryer
- 1 x Bow area professional LIEBHERR freezer
- 1 x Crew Dinette professional MIELE washer
- 1 x Crew Dinette's professional MIELE dryer
- Additional MIELE upgrade household appliances
- LAN & Wi-Fi Network; (2) 4G GSM outdoor antennas; Wi-Fi Marine antenna

TENDER & TOYS

- Williams 5.65m 190hp
- Jet Ski Spark 90hp



BLACKORANGE
SUPERYACHT EXPERTS

Grégory GHERAIA

Director of BLACKORANGE Superyacht Experts

+33699939099 | +971505796099

greg@blackorange-yachts.com