

M/Y SEHAMIA

GULF CRAFT - Majesty 155 - 2018



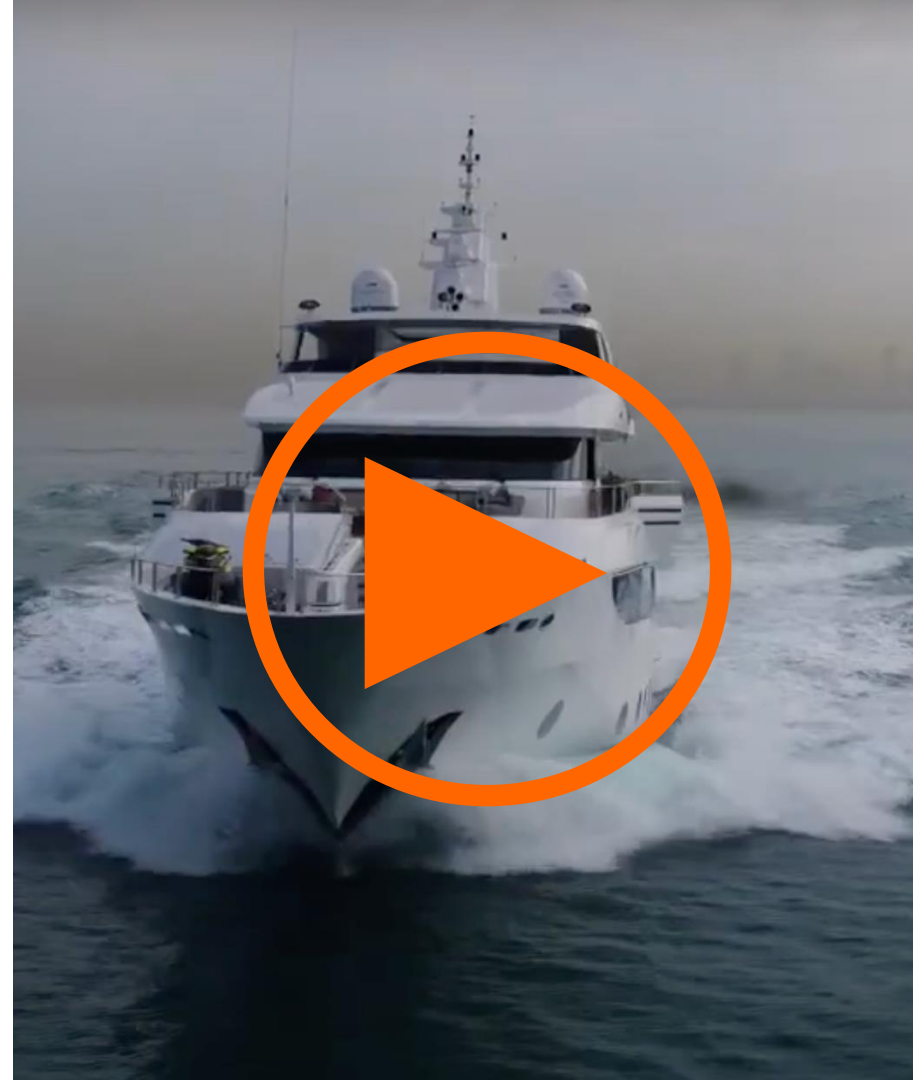
M/Y SEHAMIA

GULF CRAFT – Majesty 155 - 2018

LOA:	47,6 m	Crew:	13
Beam:	9,6 m	Speed:	cruising 14 Kn max. 17 Kn
Draft:	2,2 m	Range:	4,200 nm
Guests:	8 cabins	Price:	14,900,000 US\$
Class:	RINA	Location:	Dubai, UAE
Flag:	Saudi Arabia		

KEY FEATURES

- Huge volumes
- Opulent interiors
- One owner since new, only privately used and low engine hours
- Huge master on the bridge deck
- 8 guest cabins
- 2 elevators
- Large garage and beach club
- Excellent condition

































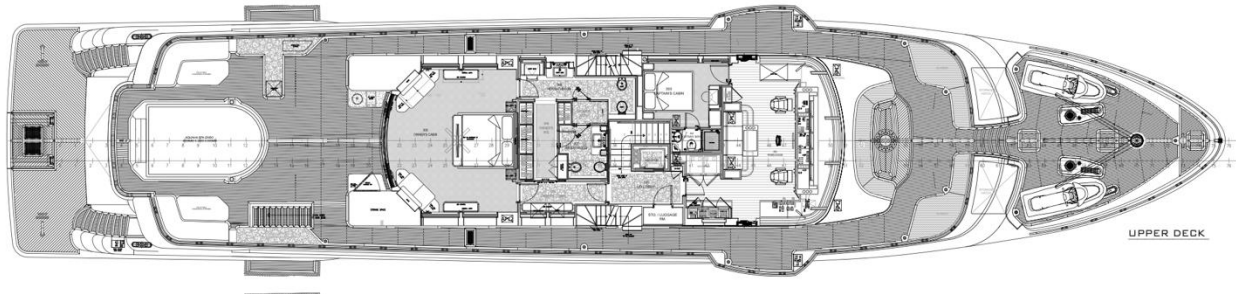
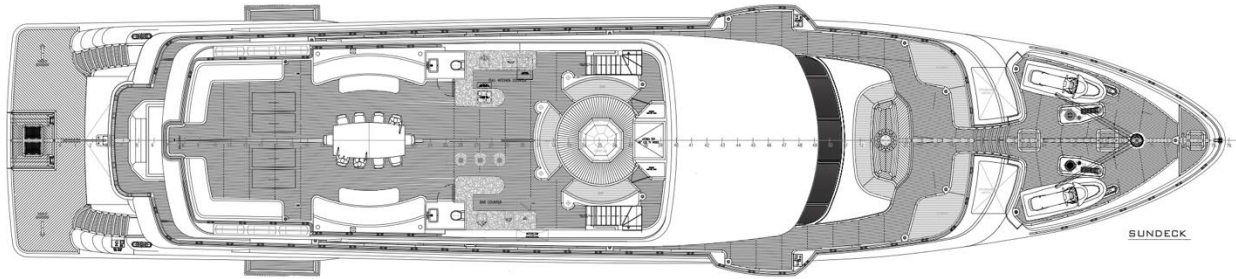
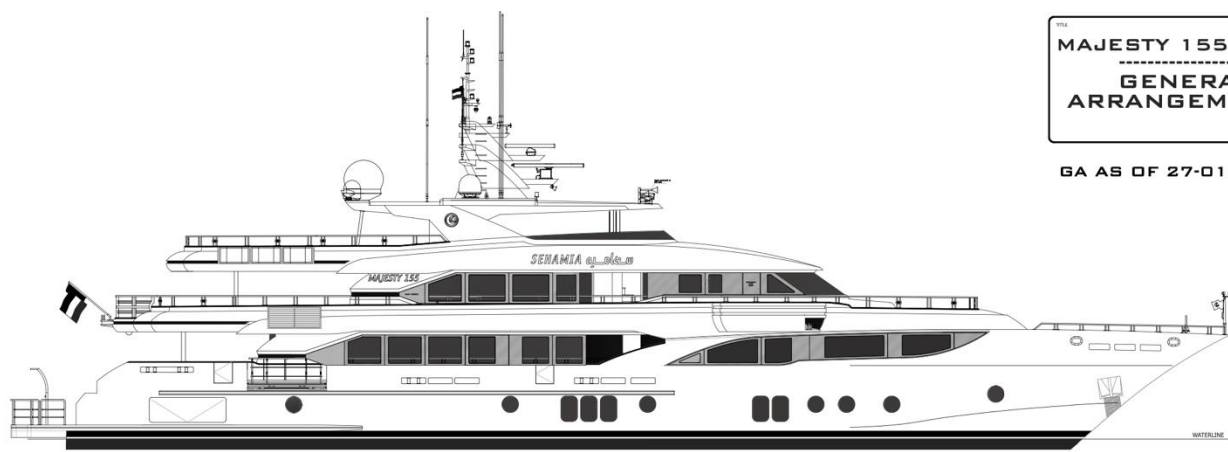


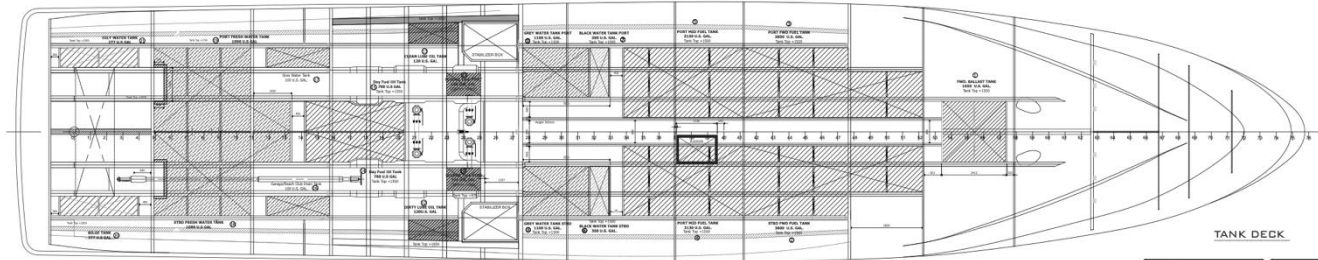
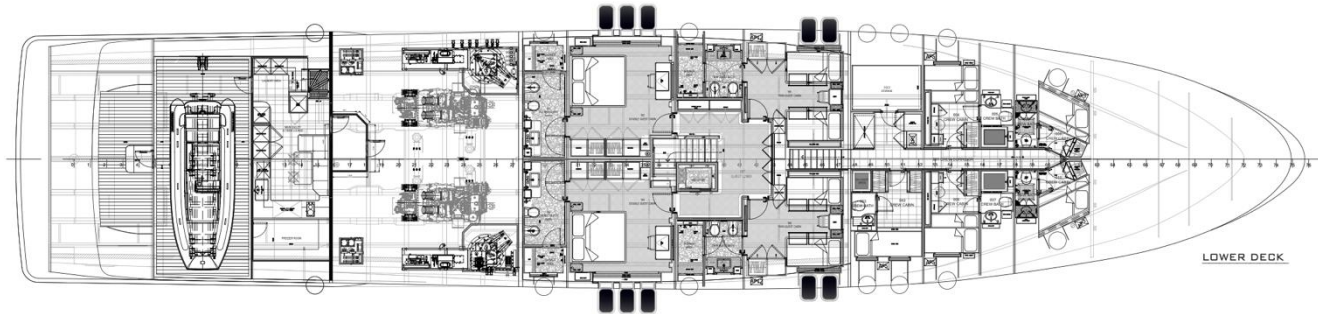
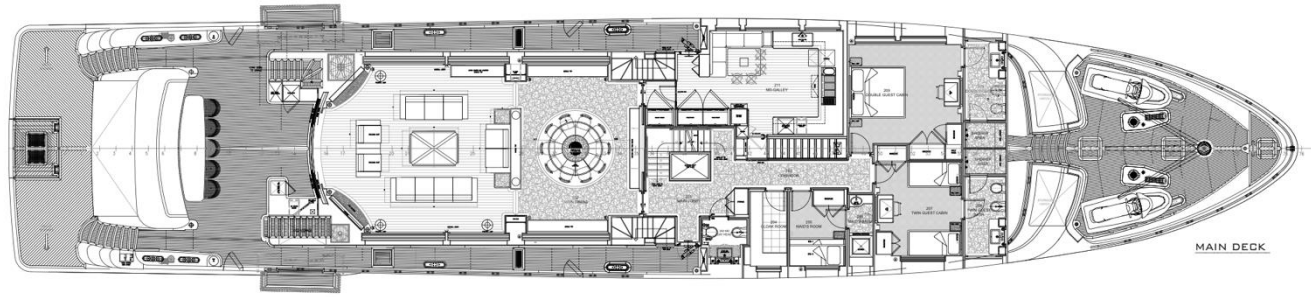




MAJESTY 155 # 02
GENERAL
ARRANGEMENT

GA AS OF 27-01-2016





REVISIONS NO. DATE BY 1 01/15/10 JLM	MAJESTY YACHTS A TOTAL SERVICE EXPERIENCE 601-119-0210 GENERAL MANAGER JLM
DRAWING NO. GC-119-02-100 SHEET NO. A1 01	

MAIN CHARACTERISTICS

Name	SEHAMIA	
Builder	GULF CRAFT	
Model	MAJESTY 155 – Hull n°2	
Year	2018	
Hull	Displacement	
LOA	47,6 m	155'
Beam	9,6 m	31'5"
Draft	2,1 m	6'9"
Classification	RINA Pleasure	
Flag	Saudi Arabia	
Port of Registry	Dammam	
Max Speed	17,5 knots	
Cruising Speed	14 knots	
Guest Accommodation	8 staterooms	
Crew Accommodation	13 crew	

CONSTRUCTION

Hull Material	GRP
Decks	Teak with black caulking
Gross Tonnage	525
Net Tonnage	158

MAIN MACHINERY

Engines	2x MTU
Engines model	Model #12V, 4000 M63,2012BHP, 1500kw
Engine Hours	750 Hours (November 2024)
Fuel Type	Diesel

GENERATORS & ELECTRICITY

Generators	2 KOHLER, Model-125EFOZDJ, 125Kw, 230/400V	
Generators' hours	1564 &1560hrs. Serviced on 27/8/2024	
Emergency generators	NORTHERN LIGHTS, Model -FX332K2, 22Kw, 50Hz	
Electricity	415V/230V	
Inverter	Eezel T81	

CAPACITIES

Fuel	54,730 liters	14,460 Gal
Water	7,206 liters	1,904 Gal
Black water	2,085 liters	551 Gal
Grey water	7,134 liters	1,885 Gal

ANCILIARY MACHINERY

Water makers	3x SEA RECOVERY, Type - AQUA WHIPER
Water makers capacity	1,800 Gal per hour
Stabilizers	ABT TRAC fins
Bow Thruster	ABT- TRAC, Type 24", Hydraulic power- 150HP
Steering system	Jastram Engineering
Fuel Transfer pump	AC PUMP, GIANNESCHI, Model-ACB 331/B
	DC PUMP, GIANNESCHI, Model - IN 12A
Air Conditioning	Climma Chiller System 6 Units
Air Compressor	Jun Air, Model 2000, Supply – 400V, Max-10bar
Water Filtration	1,800 Gel per hour
Fresh Water Pumps	AC PUMP -GIANNESCHI, Type -JET 518 B TE
	DC PUMP -GIANNESCHI, Type -ECOINEX 1/15
Sewage treatment	TECHNICOMAR, Type ECOMar 16, 6,000 Ltrs / day
Toilet System	TECMA Toilets, 24V DC, 30A
Bilge System	AC/ PUMP - GIANNESCHI, 230/400V, Power -7.5KW, Manual pump-SUPER LARIO 3"

TENDER & TOYS

Jetskis	2x Yamaha jetskis
Tender	Castoldi diesel Jet Tender 17, 9 passengers, max 810 kgs

DECK MACHINERY & EQUIPMENT

Anchor	HHP ANCHOR, TYPE - POOL W, Weight -230Kg
Anchor Chains	220 mtrs, diameter 19 mm, grade U-2
Anchor Windlass	MAXWELL VRC8000, vertical, hydraulic drive
Capstan	SINGLE SPEED, 24V DC
Transformer	OPECMARE, 5steps, capacity-1600kg
Tender Hoist	BESENZONI sliding crane ni the garage
Crane	OPECMARE, telescopic for launching jetskis (bow)
Elevators	BESENZONI FOR 4PEOPLE FROM LD TO UD ONE SINGLE MAN ELEVATOR FROM MD TO SUN DECK

SECURITY, FIRE FIGHTING & SAFETY EQUIPMENT

Liferafts	6 Liferafts each 10 persons capacity, serviced on 15/8/24
EPIRB	JOTRON, Type TRON 60 GPS, Serial No. 20442, valid till August 2027
SART	2 JOTRON, Type TRON SART 20, Valid 8/2027
Inflatable life Jackets	x48 Updated on 22/8/24
Life buoy rings	4 with lights, 2 with rescue line, 2 without (Total 8)
Breathing Apparatus Set	x2 Updated on 27/7/24
EEBD	4 sets, Updated on 27/7/24
Portable Fire Extinguishers	38 Nos. Updated on 27/7/24
FM 200	Updated on 27/7/24
Smoke Detectors	In all rooms

ENTERTAINMENT & A/V EQUIPMENT

Satellite TV A/V System	KVH TV11, 2 ANTENNAS SYNCHRONISED BANG & OLUFSEN , All guestrooms have B&O TVs 3X55" TVs (cockpits and sundeck) X2 Samsung for crew (one in the crew mess room and one in captain cabin)
--------------------------------	--

NAVIGATION & COMMUNICATION

Navigation System	FURUNO
Auto Pilot	Raytheon Anschutz, Type Pilot Star - D
Navigation displays	FURUNO NAVNET 3D
ECDIS	FURUNO, Model - FMD-3200-BB
GPS	FURUNO Model - GP330B
GPS Compass	FURUNO Type SC- 30
Gyro Compass	RAYTHEON ANSCHUTZ, Type - STD-22
Digital Fish Finder	FURUNO Type - DFF1
Radar	FURUNO, Type - OPEN ARRAY, Model - DRS4A FURUNO, Type - OPEN ARRAY, Model - DRS12A FURUNO, CLASS A, Type - FA-170 FLIR, Model - M625L 2X FURUNO, Model FM8900S FURUNO, Model FS-2575C 3x JOTRON, RT 20
AIS	FURUNO, IMMARSAT, Model - FELCOM-500
Night vision camera	THURAYA, Type -FDU-XT (Docking model)
VHF	IRIDIUM
MF/HF Radio Telephone	ZENITEL, Type-VINGTOR STENTOFON-ACM-M-D-V2
GMDSS H/H VHF	
Broadband communication	
Satellite Phone 1	
Satellite Phone 2	
Intercom System	

GALLEY & LAUNDRY EQUIPMENT

Washing Machine	2x MIELE PROFESSIONAL, Model PW 6065 - VARIO
Dryer	2x MIELE PROFESSIONAL, Model PT 7135C -VARIO
Hob Stoves	2x MIELE in the aft galley, LD 1x MIELE in the main galley, MD 1x MIELE, SD
Oven	1x MIELE in the aft galley, LD 2x MIELE in the main galley, MD 1x MIELE on the SD
Barbeque burners	2x on the SD 1x on the UD cockpit
Wine coolers	1x large in the main galley, MD 1x small in the owner's room lobby 1x small, SD
Fridges & Freezers	1 MIELE double doors with freezer, aft galley LD 2x large in the main galley, MD 1x large built-in fridge in the crew area, LD 1x large freezer in the crew area, LD 1x small fridge in the owner's room lobby 1x small fridge, SD 1x small, MD cockpit 1x MIELE, SD
Dishwasher	1x big freezer room, forward hatch, port side
Ice Makers	3x MD (cockpit, saloon & galley) 1x UD cockpit 1x SD



BLACKORANGE
S U P E R Y A C H T E X P E R T S

Grégory GHERAIA

Director of BLACKORANGE Superyacht Experts

+33699939099 | +971505796099

greg@blackorange-yachts.com

Benjamin PARRATTE

Partner at BLACKORANGE Superyacht Experts

+33614975050

benjamin@blackorange-yachts.com