



FIORENTE



FIARENTE AT ANCHOR

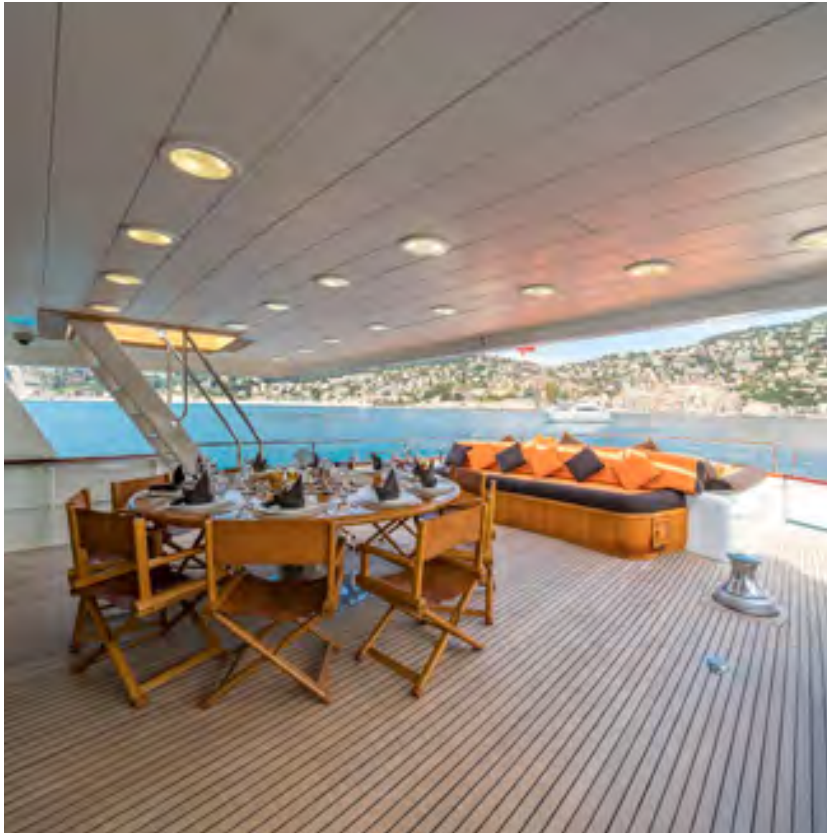


FIORENTE VIEW OF THE MAIN DECK AFT



FIORENTE MAIN DECK AFT





FIORENTE MAIN DECK AFT





FIORANTE MAIN SALON



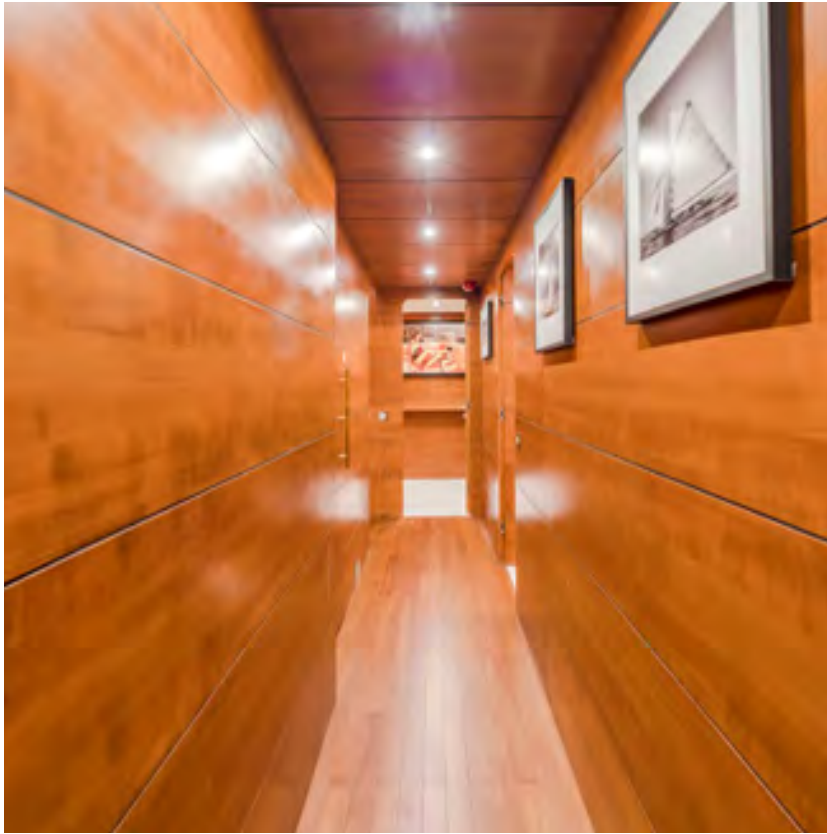
FIORANTE MAIN SALON



FIORANTE OFFICE



FIORANTE MEDIA ROOM



FIORANTE CORRIDOR



FIORANTE MASTER STATEROOM



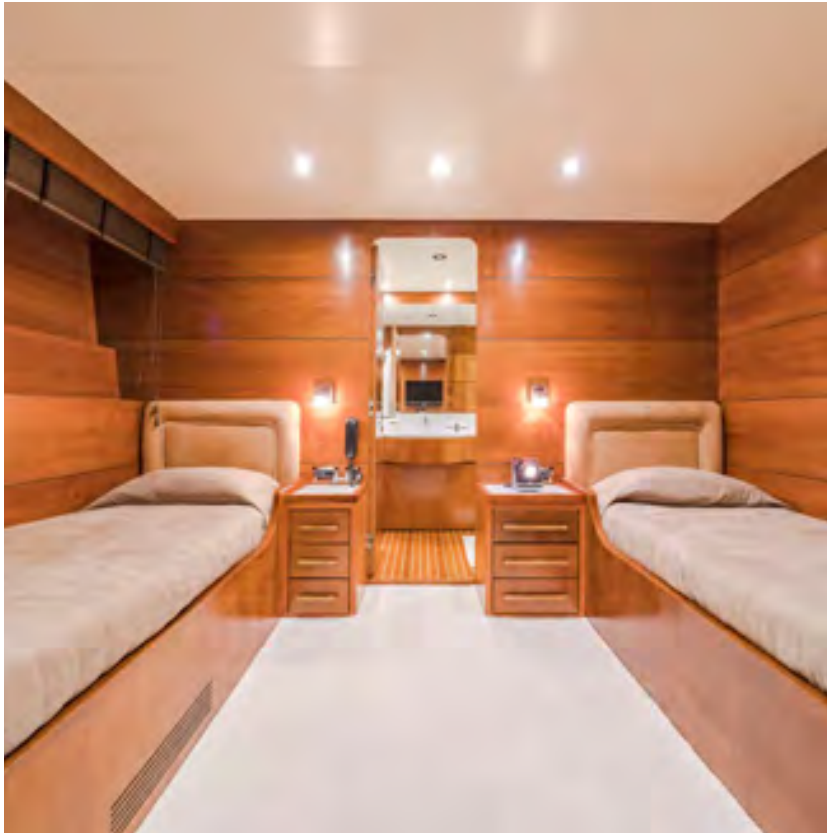
FIORANTE MASTER STATEROOM



FIORANTE MASTER ENSUITE



FIORANTE VIP STATEROOM



FIORANTE TWIN CABIN



FIORANTE UPPER DECK DOUBLE STATEROOM





FIORANTE UPPER DECK



FIORANTE UPPER DECK



Fiorente

Asking Price: € 1,900,000

BUILDER:	Ferronavale	LOA:	37 m
YEAR:	1990	BEAM:	7.46 m
FLAG / CLASS:	St. Vincent & Grenadines	DRAFT:	2.90 m
	RINA Commercial		
DESIGNER:	Alberto Pinto	SPEED:	12 – 14 Knots
ACCOM:	10 Guests in 5 Cabins	HULL:	Steel
LYING:	South of France	ENGINES:	2 x 500hp Scania

The Specification

FIORENTE is a classic custom-built yacht, delivered by Ferronavale in 1990. This 37m motor yacht has benefitted from an extensive refit from 2016-2018 to the perfectionist standard of her world-renowned Italian builder.

An impressive Italian design pedigree, FIORENTE boasts all the latest innovations and comforts, featuring 5 voluminous Staterooms she can comfortably accommodate 10 guests. Comprising an en-suite Master, 2 Double Staterooms and 2 Twin Cabins she is equipped with at anchor stabilisers ensuring a maximum comfort for all.

When it comes to al fresco entertainment, FIORENTE is a winning choice with multiple seating and dining arrangements across 2 spacious deck areas. Her crew of 6 are highly skilled in running a yacht of this ampler and are passionate about delivering a luxury service.

Featuring a Sonos sound system throughout, state-of-the-art media room and entertainment system featuring Bang and Olufsen technology.

FIORENTE is a twin-engine motor yacht powered by 500hp Scania engines with a cruising speed of 12 knots and a range of 2800 nautical miles. She has a successful charter yacht record.

Main Characteristics

LOA:	36.95m/121'3"
Beam:	7.46m/24'6"
Draft:	2.90m/9'6"
Gross Tons:	245 tons
Fuel consumption:	100 litres/hour
Engines:	2 x 500hp Scania 368Kw
Engine Hours:	2,780 (January 2025)
Generators:	2 x Kohler 80kW 400V50 hertz
Generators Hours:	6,100 hours (January 2025)
Air Conditioning:	Condaria
Stabilisers:	Anchor & underway Matn's
Watermaker:	2 x IDRUMAR – 300 litres/hour

Accommodation: 10 guests in 5 cabins
Number of crew: 7

Range: 2500 nm
Max speed: 14 knots
Cruising speed: 12 knots

Guest Accommodation

Accommodation for 10 guests in 5 cabins. Four staterooms to be found on the lower deck and an additional cabin situated on the upper deck. A full beam Master Stateroom is located on the lower deck with king size bed and the additional staterooms are all ensuite.

Audio Visual Equipment and Deck Facilities

Main salon: 4K TV 55'
Media room (main deck): TV Bang & Olufsen BeoVision11 46' Master stateroom (lower deck): TV
Bang & Olufsen BeoVision11 40'
Guest cabins (3 x lower deck, 1 x upper deck): TV Sony Slim Sony slim led edge Control by iPad miniAirplay
Sonos Audio System

Communications

Starlink
4G WIFI (Where cell phone coverage permits) Satcom: Standard C
VHF Fixed Sailor
VHF DSC fixed: Furuno Class FM4721 Telephone: 1x Alcatel
Telephone: Thrane, Cobham UHF: 6
VHF portable: 2 x Sailor Thrane and Thrane GMDSS

Gym equipment

Running machine Exercise bike

Tenders & Toys

1 x tender Alson Flash 510 outboard engine Honda 4 stroke 90hp 1 x Jet ski Yamaha FX cruiser
1100cc (new engine in 2024).
2 x paddleboard Jobe 1 x two seat Kayak Bic 1 x
Wakeboard Jobe 1 x Slalom Ski Connelly 1 x Banana (4
person)
7 x Mask/Snorkel/Fin Sets
1 x Diving Equipment (BC/cylinder/belt)

LEGAL DISCLAIMER

These particulars have been prepared from information provided and obtained from sources believed to be correct but are not guaranteed. This information is intended as a general guide to the vessel. We cannot, however, be liable for any inaccuracy. It is up to the purchaser to confirm details of concern to him by survey, inspection and enquiry of the seller and to ensure that the purchase contract properly reflects one's concern and specific details upon which one may rely. All information in this document is provided in good faith but not binding for legal reasons.



FIORENTE

Length: 37.00m (121' 5")

Beam: 7.90m (25' 11")

Draft: 2.90m (9' 6")

Year built: 1990

Refit: from 2014 to 2017

Builder: Ferronavale

Flag: St. Vincent & Grenadines

Number of cabins: 5

Cabin configuration: 3 double, 2 twin

Total guests (sleeping): 10

Total guests (cruising): 10

This document is not contractual. All specifications are given in good faith and offered for informational purposes only. The publisher and company do not warrant or assume any legal liability or responsibility for the accuracy, completeness, or usefulness of any information and/or images displayed. Yacht inventory, specifications and charter prices are subject to change without prior notice. None of the text and/or images used in this brochure may be reproduced without written consent from the publisher.



BLACKORANGE
SUPERYACHT EXPERTS

Grégory GHERAIA

Director of BLACKORANGE Superyacht Experts

+336999939099 | +97150 5796099 |

greg@blackorange-yachts.com

CANNES – DUBAI – HONG-KONG – BARCELONA – GENEVE